

Enjoy your ideal lifestyle  
by making your home at...



**HAW CREEK MEWS**  
**TOWNHOMES**  
Distinctive Apartment Living



---

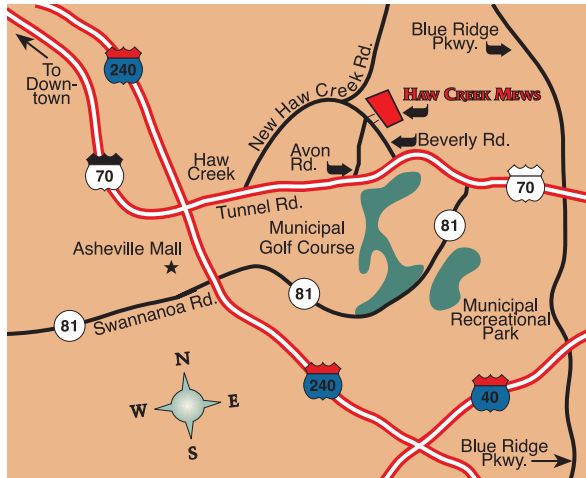
A Planned Community

---

These innovatively designed townhome style-apartments for rent are just minutes away from everything you need. In addition to the convenient location, these spacious one, two, and three bedroom apartment homes offer many wonderful amenities from a 24-hour cardiovascular fitness center, resort-style pool and business center with WIFI. These apartments for rent in Asheville, NC are pet-friendly so your four-legged friends can enjoy living with you as well.

Nestled in the mountains of North Carolina, Asheville is a region of art and history. The scenic Blue Ridge Parkway runs through the area and it is home to the historic Biltmore Estate and the famous Grove Park Inn. American Style Magazine listed Asheville as one of the "Top 25 Small Cities for Art" in its annual list from 2000 – 2012 and in 2012 Forbes named it one of the "25 Best Places for Business and Careers."

Haw Creek Mews Apartments and Townhomes has professional and friendly on-site management and maintenance personnel for information and resources when you need them. For a great lifestyle in Asheville apartments, look no further than the residences at Haw Creek Mews. These apartments in Asheville, NC are everything you want in your home: comfort, style, and convenience. Ideally located near I-240, it's a great place to live.



**Call or Text Us Today! 828-298-0000**

## Premium Features and Amenities:

- Private Entrances
- Euro Style Kitchens with Microwaves
- Pet Friendly Community
- Walk-In Closets
- Patio/Balcony
- Playground
- Sparkling Swimming Pool
- 24/7 Fitness Center
- Clubhouse with Wi-Fi
- In-Unit Laundry Hook Ups & Laundry Center with Mobile Pay
- Cathedral Ceilings (select units)



## 1 & 2 Bedroom Garden Apartments

## 3 Bedroom Garden Apartment



**Abbingdon**  
1 Bedroom  
1 Bath  
773 sq ft



**Bradford**  
2 Bedroom  
1 Bath  
941 sq ft



**Easton**  
2 Bedroom  
2 Bath  
1156 sq ft



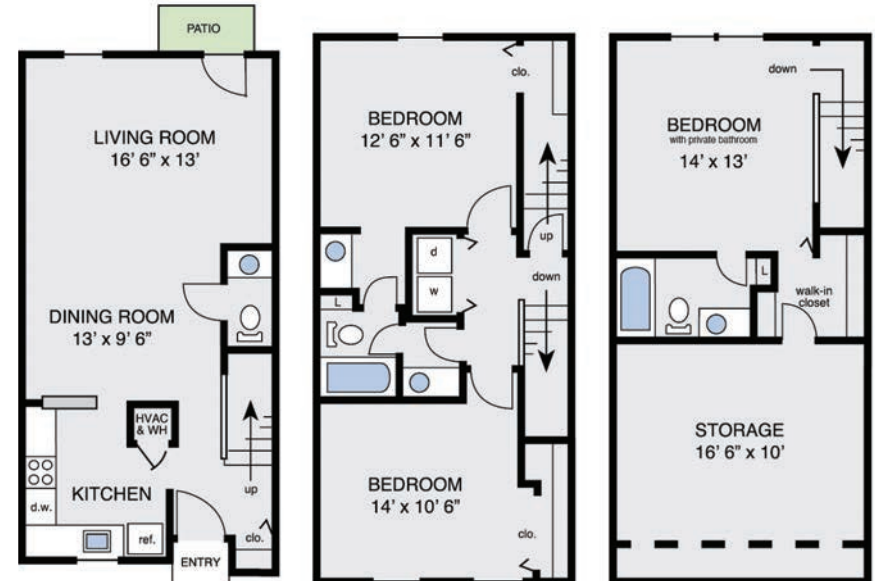
**Hawthorne**  
3 Bedroom  
2 Bath  
1163 sq ft

## 2 Bedroom Townhome

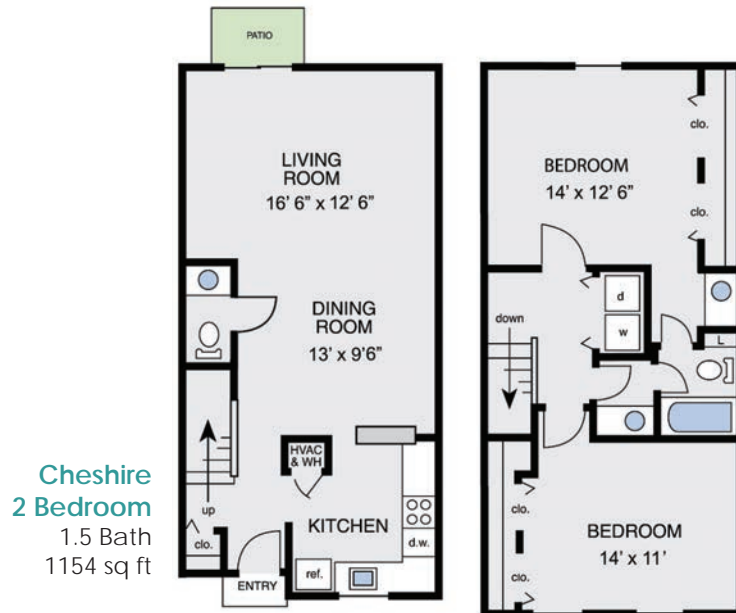


**Cumberland**  
2 Bedroom  
2.5 Bath  
1154 sq ft

## 3 Bedroom Townhome



**Laurel**  
3 Bedroom  
2.5 Bath  
1701 sq ft

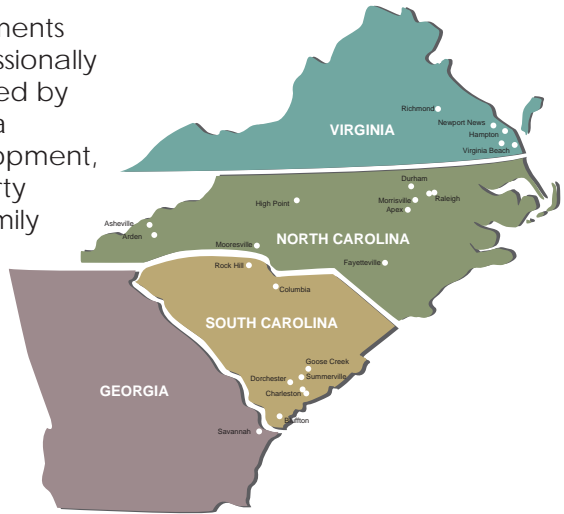


**Cheshire**  
2 Bedroom  
1.5 Bath  
1154 sq ft



## About Palms Associates L.L.C.

Haw Creek Mews Apartments and Townhomes is professionally managed and maintained by Palms Associates L.L.C., a national leader in development, construction, and property management of multifamily rental communities. With over 50 years of experience, our dedicated team of over 200 professionals manages over 6,000 apartment residences throughout Virginia, North Carolina, South Carolina, and Georgia.



A community maintained by Palms Associates L.L.C. is subject to the high standards of professional management, to keep carefully landscaped grounds and high quality materials looking their best every day. Most importantly, we are quality people working diligently every day to enhance our residents' lifestyles.

For more information visit us at [www.palms.net](http://www.palms.net).

### Contact Us Today!

145 Haw Creek Mews Dr.  
Asheville, NC 28805  
[www.hawcreekmewsapts.com](http://www.hawcreekmewsapts.com)  
Call or Text Us Today! 828-298-0000

